



**Chuphotic UPS All Reliable Solutions**

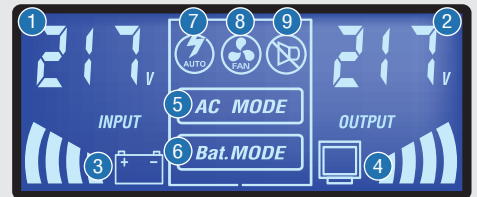
**Mercury Diamond Smart Lithium-Sine**  
 Pure Sine Line Interactive UPS with Stabilizer

**Long Backup UPS**

**Features**

- Microprocessor Control Line Interactive UPS with Stabilizer
- Power Quality Protection : Blackout, Over / Under Voltage, Sag & Swell
- Buck / Double Boost Stabilizer Fully Protection
- Input voltage Range 165-275 Vac @220Vac ±25%
- Electric Overload protection and Reset CB @Short circuit
- Filter noise circuit By EM / RFI Filter
- Lithium Iron Battery High Capacity for Long Backup Time @Compack UPS
- Intelligent Battery Management with Battery protection & Battery Replacement
- Silence Alarm : Stop alarm sounds when the Backup Power
- Automatic power on When the electricity return to normal conditions (Auto restart)
- Compatible with the generator source

**LCD DISPLAY REAL TIME STATUS**

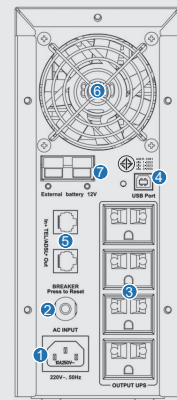


- |                              |                    |                  |
|------------------------------|--------------------|------------------|
| 1. Input Voltage & Frequency | 4. Load Percentage | 7. Auto Mode     |
| 2. Output Voltage            | 5. AC Mode         | 8. Fan           |
| 3. Battery Percentage        | 6. Battery Mode    | 9. Silence Alarm |

**REAR PANEL**

**Application UPS:**

- iCT Server / PC
- Network / Wifi
- Smart Counter
- CCTV @NVR
- PABX / Telecom
- PLC & Controller
- Ink Jet Sticker
- Digital Scale



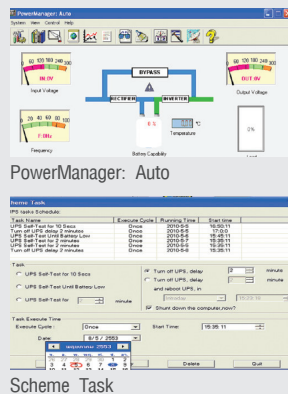
1. Inlet IEC320
2. Auto Reset CB
3. Backup Outlets
4. USB Port
5. TEL/FAX/ADSL
6. Fan
7. External Battery

**LIS1000, LIS1200, LIS1500, LIS2000**

**PowerManager**

UPS Monitoring and Management Software

- Compatible with the operating system - Windows 98, Me, NT, 2000, XP, 2003, VISTA, Windows 7, Linux, SCO Unix, FreeBSD
- **PowerManager** Management Software and Control the operation of UPS, Increase the performance of the UPS and And prevent maintenance to the computer system efficiently
- **PowerManager** Setting time on - off computer. And UPS Test table in advance with the software
- Event log report electrical connected to the ups



มอก.1291  
 เล่ม 1-2553  
 เล่ม 2-2553  
 เล่ม 3-2555



www.chuphotic.com

# Mercury Diamond Smart Lithium-Sine

## Pure Sine Line Interactive UPS with Stabilizer



Model Long Backup UPS	Lithium UPS	LIS1000	LIS1200	LIS1500	LIS2000	
<b>CAPACITY</b>	Power VA/W PF0.6	1000VA / 600W	1200VA / 720W	1500VA / 900W	2000VA / 1200W	
<b>Application</b>	Computer Server Load & CCTV	1 Server	1-2 Server	2 Server	2 Hi-Server	
<b>TECHNOOY</b>	UPS System	Pure Sine Line Interactive UPS with stabilizer				
	Control System	Microprocessor controlled				
	Voltage Regulator	Buck/Double boost				
<b>INPUT</b>	Input Voltage	220 Vac - 25%, + 25% ( 165-275 Vac )				
	Input Frequency	50 / 60 Hz $\pm$ 10% (Automatic sensing)				
<b>OUTPUT</b>	Automatic Voltage Regulator	220 Vac $\pm$ 10% (198 - 242 Vac)				
	Backup Mode	220 Vac $\pm$ 3% (213.4 - 226.6 Vac)				
	Output Frequency	50/60 Hz $\pm$ 0.1%				
	Wave Form	Pure Sine Wave at THDv < 3%				
	Transfer Time	< 2-4 ms (Automatic Voltage Regulator)				
	Overload Capability	101 - 110% Overload alarm for 3 minutes, then the UPS Shutdown automatically				
<b>PROTECTION</b>	Shot Circuit	Stop the UPS automatically and alarm				
	Input Overload	Circuit breaker protection and Resetable				
	Automatic Noload shutdown (Option)	Automated shutdown When there is no load to use (Backup mode)				
	Overload and Alarm	Protection & alarm				
	Surge energy Dissipation	320 Joules within 2 ms ( IC = 6500 A )				
	Maximun Power Surge	1,000,000 Watt within 100 microseconds				
	Battery protection system	Hi-volt Battery, Buck-Boost-Float Charge, Low Battery Alarm, Low Battery Shutdown Protection				
	Surge protection system Tel/Fax/ADSL	RJ11/RJ45				
Sound Noise level	< 40 dBA At 1 meter					
<b>BATTERY</b>	Battery Type Lithium-ion	LFP : LiFeP04 Lithium Iron with BMS @Reliability 10Years Service Life				
	Battery Time	600W at 5 min	720W at 5 min	900W at 5 min	1200W at 5 min	
	Backup voltage Operation	Lithium Iron LFP3.2V8S : 25.6V @22.4-28.8V Float 27.6V 3A				
	Charger current / Battery recharge	Standard UPS: 3A/Lithium Battery charge system ( Buck-Boost-Float charge )				
	Recharge Time	4 - 8 hours to 90% Battery Capacity				
<b>OUTLET</b>	Outlet	4 Plug Universal (Round & Flat)				
<b>OTHER PROPERTIES</b>	Turn on from the power supply	AC/DC Start				
	UPS monitoring system	Auto Self- Test and Manual Self- Test				
	Interface port	USB Port				
	Software	UPS Monitoring By PowerManager software				
<b>INDICATOR</b>	LCD Display	Input/Output Voltage, Frequency, AVR mode, Backup mode, Battery Recharge, Full battery, Battery low, Battery Replacement, Load level, Overload conditions Failure - Alarm				
<b>AUDIBLE ALARM</b>	Backup time	Alarm every 10 seconds				
	Low battery voltage	Alarm every 1 seconds				
	Overload	Noise alarm continuous				
	Abnormal state	Noise alarm continuous				
	Battery Replacement	LCD Display shows the battery symbol flashes				
<b>ENVIRONMENT</b>	Temperature	0-45°C				
	Humidity	0-90% ( Non - Condensing )				
<b>PHYSICAL</b>	Dimension (WxDxH) (mm.)	Standard UPS	110 x 340 x 265			
		Long Backup UPS	110 x 340 x 265			
	Net weight (kg)	Standard UPS	9.5	10.0	11.0	12.0
		Long Backup UPS	7.0	7.5	8.0	9.0
<b>CONFORMANCE</b>	Standard Products	TIS1291 Part 1-2553, Part 2-2553, Part 3-2555 : C1, CE:IEC62040 by ISO 9001:2015, ISO 14001:2015				

\* Computer\* = Computer + monitor LED 17" / Printer\*\* = Printer Inkjet

\*Continuous products development is our commitment. In that manner, the above specifications may be changed without prior notice.

CHU-TH.BRO-1.16.UPS.MDS Li-Sine.Rev1.00/2026

### CHUPHOTIC Co.,Ltd.

949 Moo 9, Sumrong-Nue, Muang Samutprakarn, Samutprakarn 10270  
 Tel. : 02 186 3010 (Auto) Fax : 02 186 3018-19  
 www.chuphotic.com  
 E-mail: ups@chuphotic.com

### Authorized Dealer :