

VENUS ULTIMATE Plus Li

VNU 1000P - 10KP RT Li



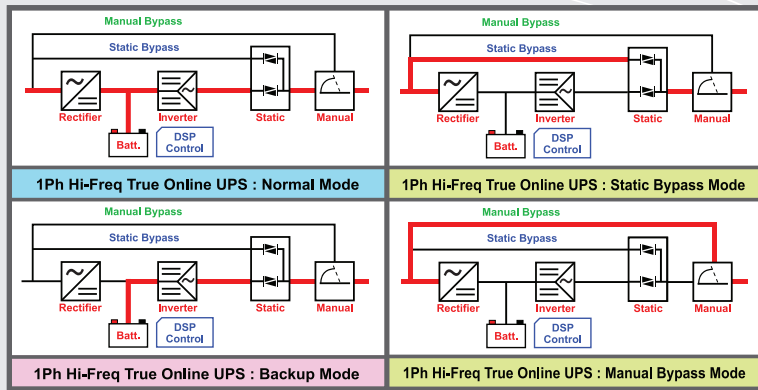
RT : Rack / Tower 2U/3U

DSP TRUE ONLINE DOUBLE CONVERSION UPS

Features

- True Online Double Conversion Pure Sine Wave UPS
- Advanced DSP digital controlled and IGBT technology
- High input Power Factor Correction (PFC>0.99)
- Output Pure Sine Wave less than 3% (THDv)
- Output Voltage 220Vac +/-1% (200, 208, 220, 230, 240V)
- Wide Input Voltage Range 120-300Vac
- High Inverter Efficiency (approx.≥90%)
- Zero Transfer Time with Static Transfer Switch (SCR)
- Self Diagnosis at UPS start up or Manual Self Test
- Advanced Battery Management (ABM)
- Battery Capacity & Remaining Backup Time
- LiFePO4 High Energy Density in Low Maintenance Cost
- Extended 2-4Time Backup Time in Compact UPS
- 10Years Self Life & Cycle Life 3000Times @80% DOD
- EMI/RFI and Power Line Noise protection
- Blackout, Brownout, Surge, Lightning, Spike
- Overload and Short circuit Protection
- USB Port with UPSilon 2000 UPS Monitoring
- External Battery Unit (Option: Battery charger 3/6A)
- SNMP / HTTP Internet Network / AS400 (Option)
- Parallel Redundancy N+X 5-10kVA (Option)
- Maintenance Bypass switch 5-10kVA
- EPO: Emergency Power Off / ECO: Economy (Option)
- TIS 1291 Part 1-2553, Part 2-2553, Part 3-2555
- CE : IEC62040-1, -2, -3, IEC55022, IEC61000
- ISO9001 / ISO14001 : 2015 Certified Manufacturer

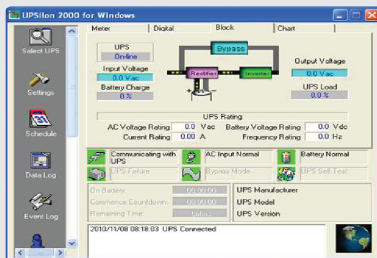
UPS Function & UPS Mode



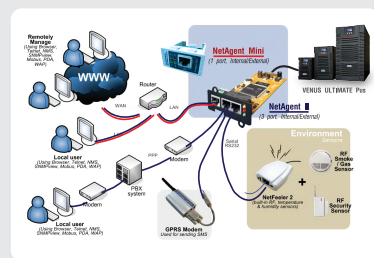
APPLICATIONS



- Data Center & Server Room
- Financial And Securities
- Postal & Telecommunications



UPSilon 2000 UPS Monitoring software



SNMP / HTTP Internet Network (Option)

LCD / LED Mimic REAL TIME STATUS



1. LCD Display
2. On-Line Mode
3. Battery Mode
4. Output UPS
5. Bypass Mode
6. Function Switch
7. ON/OFF Switch

Chuphotic UPS have range from 500VA to 1000KVA is also widely used to protect electronic equipments such as computer, server, networks, PABX, CCTV, telecommunications, medical, scientific equipment and industrial, etc. from blackout, browout, surge, spike, harmonic, noise and frequency drift.



มอก.1291
 เล่ม 1-2553
 เล่ม 2-2553
 เล่ม 3-2555



IEC-62040



www.chuphotic.com

VENUS ULTIMATE Plus Li

DSP TRUE ONLINE DOUBLE CONVERSION UPS



SPECIFICATION

Model	Lithium UPS	VNU1000P RTLi	VNU2000P RTLi	VNU3000P RTLi	VNU5000P RTLi	VNU6KP RTLi	VNU10KP RTLi
CAPACITY PF=1.0	For Computer Load (VA/W)	1000/1000	2000/2000	3000/3000	5000/5000	6000/6000	10000/10000
SYSTEM	Controller	Intelligent UPS with DSP control 3level IGBT Technology					
	Technology	High Frequency Double Conversion Pure sine wave UPS, Power Factor Correction(PFC) with IGBT Technology					
INPUT	Voltage	220Vac : 200/208/220/230/240 Vac Single Phase @L-N+PE					
	Voltage Range	120-286Vac at Half Load, 160-286Vac at Full Load					
	Frequency	50/60 Hz $\pm 6\%$ (Auto Detect) at nominal voltage ($\pm 10\%$ option)					
	Power Factor	PF >0.99 at Full Load, @THDi <5%					
OUTPUT	Voltage	220Vac $\pm 1\%$ / (200, 208, 230, 240V selecting on LCD panel and software)					
	Phase	Single Phase @L-N+PE					
	Frequency	Normally locked to line frequency, Free Running 50Hz $\pm 0.1\%$ / (60Hz selecting on LCD panel and software)					
	Wave Form	Pure Sine Wave					
	Harmonic Distortion	THDv <3% at Linear Load / <5% at Non Linear Load					
	Transient Condition	$\pm 5\%$ for 100% Instantaneous Load Variation (Step Load)					
	Overload Capability	120% for 60 sec., 150% for 30 sec., >150% for 1sec. Then Automatic Switch to Bypass					
	Crest Factor	3 : 1					
EFFICIENCY	DC to AC	Approximate $\geq 87\%$			Approximate $\geq 92\%$		
	AC to AC	$\geq 87\%$ at Full Linear Load			$\geq 92\%$ at Full Linear Load		
Lithium Battery High Energy Density in Compact UPS	Type	LiFePO4 : Lithium Iron Phosphate for UPS 1/3C					
	Capacity at Eff.98%	LFP 3815 (576Wh)	LFP 7615 (1152Wh)	LFP20515 (3072Wh) / LFP20530 (6144Wh)			
	Voltage	38.4Vdc (30-45V)	76.8Vdc (60-90V)	204.8Vdc (160-240V)			
	Standard Backup Time	@Server & Network 30-120 min. (Depend on Load)					
	Battery Life	10Years Self Life and Cycle Life 3000Times @80%DOD					
	Charger/Charging Time	3A / 6A Charging : 6-8hours to 90% after Load Backup					
	STANDARD	CE : IEC 60950 / IEC 62619 / IEC 62620 Transport : UN 38.3 / IEC 62133					
TRANSFER TIME	Main fail or Recover UPS to by pass and vice versa	Zero Transfer Time with Static Transfer Switch (ATS-SCR)					
INDICATOR	Front Panel LED	Line, Inverter, Bypass and Battery (Mimic)					
	Front Panel LCD	Operate UPS Status, Input Voltage, Output Voltage, Frequency, Bypass, Battery Voltage, % Battery, Remaining Backup Time, % Load, VA, Watt, Temperature, Fan and UPS Fault					
PROTECTION	EMI/RFI Attenuation	>40 dB					
	Surge Protection	Indoor: UL1449 Cat A, B / IEC 61643 LPZ 3, 2 In 3kA at 8/20 μ sec					
	Surge Energy Dissipation	SPD 300Vac : 220 Joules in 2msec at Power 30kW Imax 6kA					
AUDIBLE ALARM	Multiple Tones with Reset for Silence	Mains Failure, Low Battery, Overload and UPS Fault					
INPUT PLUG	Power Cord 1.5 meter	NEMA 5-15P / IEC320 C13			Terminal		
OUTPUT OUTLET	Tower	4xNational			Terminal		
COMMUNICATION INTERFACE	USB Port	USB Port can be connected to PC, workstation or servers for automatic unattended shutdown / RS485 / AS400 Dry Contact (Option)					
	Software	UPSilon2000 supported for windows 95, 98, NT, 2000, Me, XP, Novell Network, Linux, FreeBSD (IBM, Sun, Solaris Option)					
	SNMP/HTTP Slot	Option : SNMP CARD / AS400 Dry Contact / RS485 / NB IoT, 3G / 4G-IoT					
ACOUSTIC NOISE	At 1 meter	< 45 dBA			< 50 dBA		
ENVIRONMENT	Temperature	0-40°C					
	Humidity	RH 0-95 % (Non-Condensing)					
DIMENSIONS (WxDxH) mm	UPS include Battery	483x450x88 -2U	483x665x88 -2U	483x665x132 -3U (UPS)			
	Long Backup UPS	483x450x88 -2U	483x665x88 -2U	483x665x132 -3U (UPS & Batt.)			
	Battery Unit Extension (option)	Separate (UPS and Battery Unit extension)					
WEIGHT (approximate in Kg.)	UPS include Battery	10	18	20	N/A		
	Long Backup UPS	8	12	12	26	26	28
	Battery Unit Extension (option)	Depending on Battery Capacity					
CONFORMANCE	Design Regulation	TIS.1291 Part1-2553 : Safety, TIS.1291 Part2-2553 : EMC, TIS.1291 Part3-2555 : Performance Cat. C2, C3 CE : IEC / EN 62040-1, IEC / EN 62040-2, IEC / EN 62040-3, IEC / EN 50091-1,-2, IEC / EN 55022, IEC / EN 61000					

*All above specification may be change without prior notice.

CHU-EN.BRO-2.3.PF1.0.UPS-1P.VNU-P-Li.Rev1.00/2026

บริษัท ชูไฟติก จำกัด

949 หมู่ 9 ต.ลำไทรเหนือ อ.เมืองสมุทรปราการ จ.สมุทรปราการ 10270

โทรศัพท์: 02 186 3010 แฟกซ์: 02 186 3018-9

www.chuphotic.com

E-mail: ups@chuphotic.com

ตัวแทนจำหน่าย :